

## GEMEENTEHUIS RENSWOUDE

<b>client</b>	Gemeente Renswoude
<b>category</b>	Renovation, public building, interior
<b>program</b>	Town Hall, offices
<b>project team</b>	Bart Kellerhuis, Mario van Kooij, Marjo Langbroek, Roy van Maarseveen, Niels Hartsuiker, Koen Pörtzgen, Remco van den Broek, René de Korte
<b>contractor</b>	Bouwbedrijf Osnabrugge
<b>advisors</b>	Van Vliet bouwmanagement, IBT, M3E, IRP bouwadvies
<b>surface area</b>	1.060 m2 BVO
<b>period</b>	2020 - 2023
<b>location</b>	Renswoude

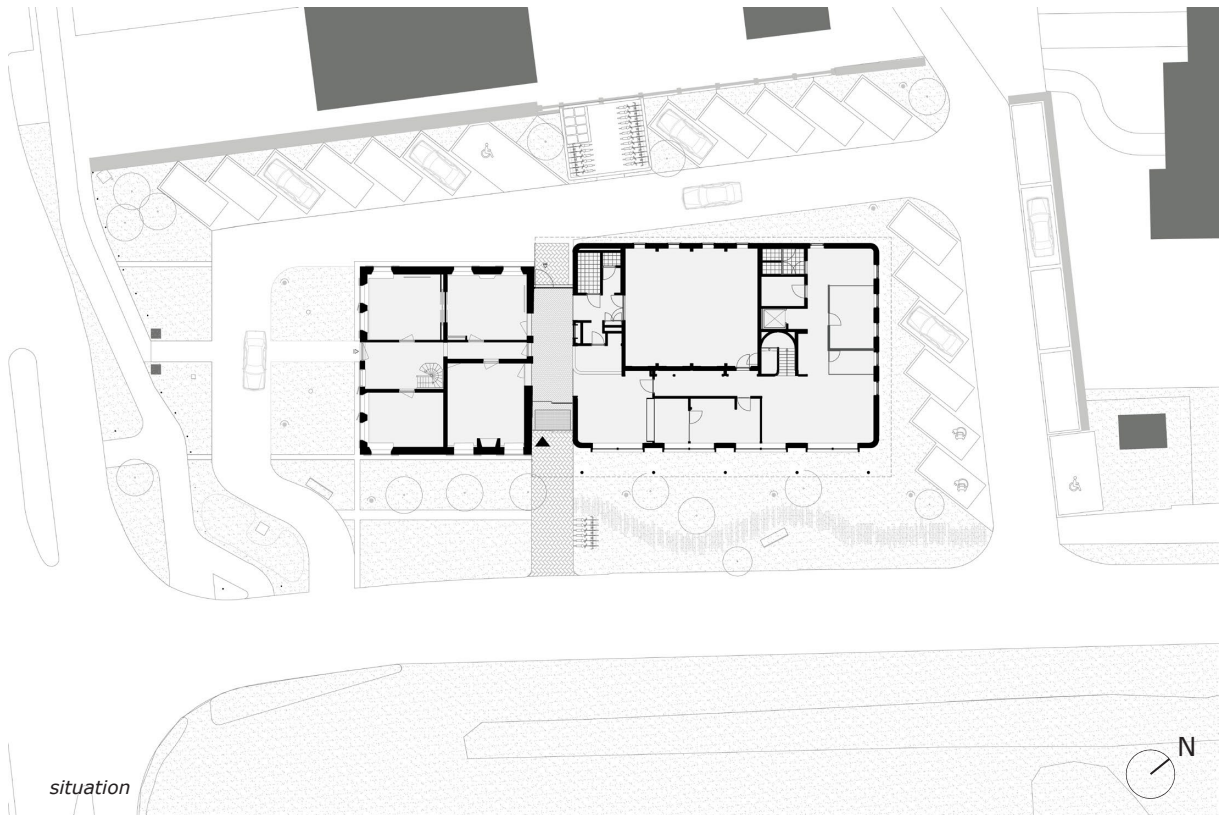
The town hall of Renswoude, which was completed in 2023, is adjacent to a large country estate. In 2020 Zecc won the architect selection for the restoration and extension of its first town hall. In addition to the characteristic national monumental front, a new two-layer volume has been realized, in which the council chamber, public counters and workplaces are housed. The extension was constructed in CLT and equipped with a circular ceramic facade of demountable brick strips with a green glaze from waste streams from the glass industry. The new public entrance is located between the monument and the extension. It provides access to public spaces in both the monument and the new building.

One of the most important design choices was to move the parking to the rear of the building. This created the opportunity to create a strong spatial connection between the town hall and the woods on the other side of the road. The greenery now flows, as it were, from forest to landscaped grounds, over the sedum-covered canopy and into the building. This creates a great experience from the workplaces of greenery and the passing of the seasons. To enhance this effect, the facade of the new building is also made of green glazed ceramic. The wood of the trees is continued outside and inside by a wooden construction. By moving the parking from the front to the rear, the town hall not only gets a beautiful, representative appearance, but road safety has also been greatly improved.



ZECC ARCHITECTEN BV TRACTIEWEG 41 3534 AP UTRECHT  
THE NETHERLANDS T+31(0)30 273 1289 INFO@ZECC.NL WWW.ZECC.NL  
BANK NL59 RABO 0394 6127 44 KVK 30 183 613 LID BNA





**zecc**

GROUNDING ARCHITECTURE





*east facade, main entrance*



*ground floor, entrance zone and service point*







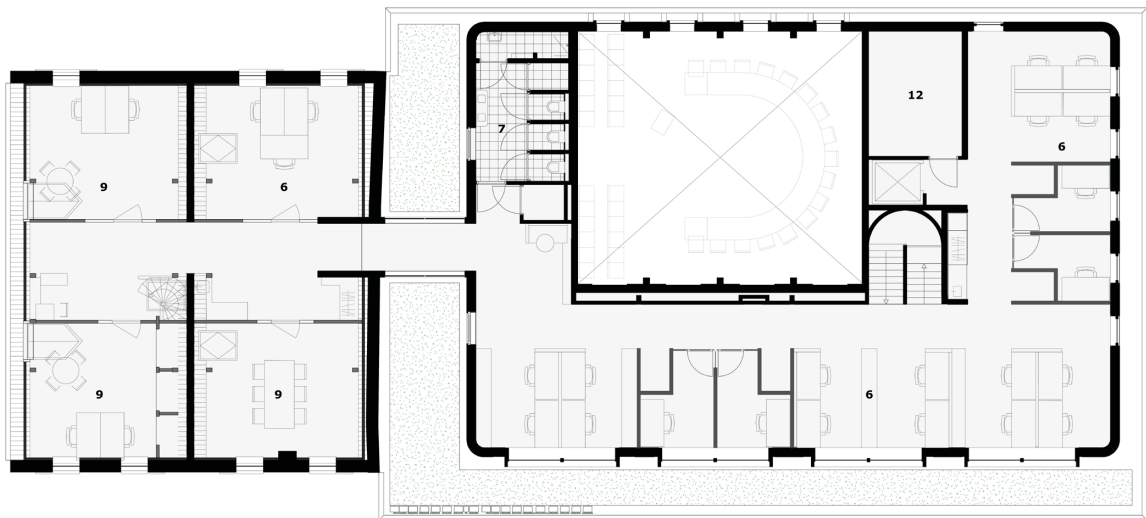
Gemeentehuis Renswoude

east facade, main entrance side view

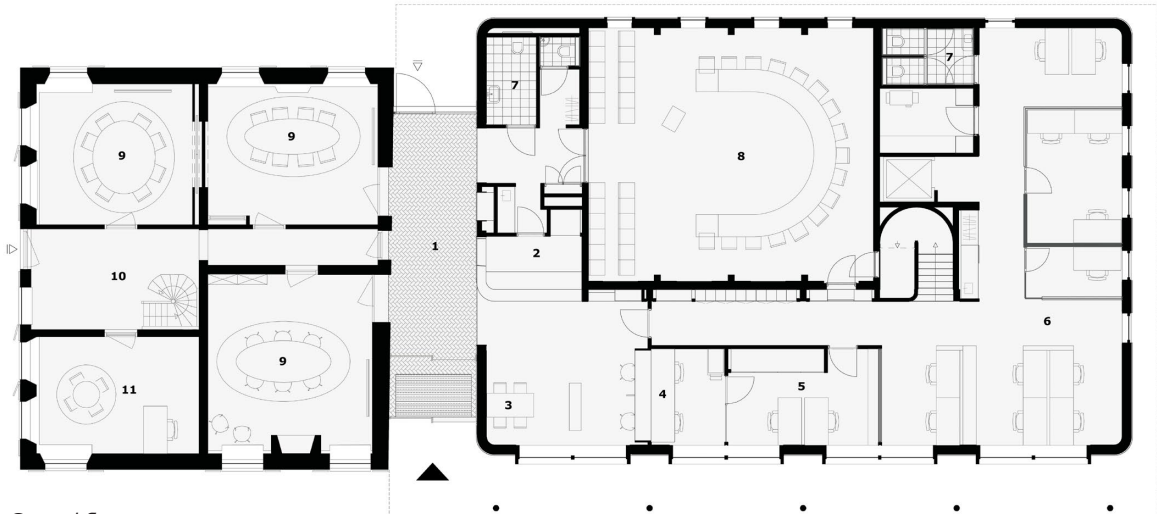


## Old and new

The building consists of the original monumental building and a newly realized modern volume. The existing part was a presbytery in 1651. Over time, more and more extensions were added in a farmhouse-like style, and the function was changed to town hall. These extensions no longer met today's requirements and detracted from the character of the original volume. The extensions have been removed and the original building has been restored with the utmost care. The required extra space has been realized as a contemporary volume with an appropriate distance from the monument.



1st floor

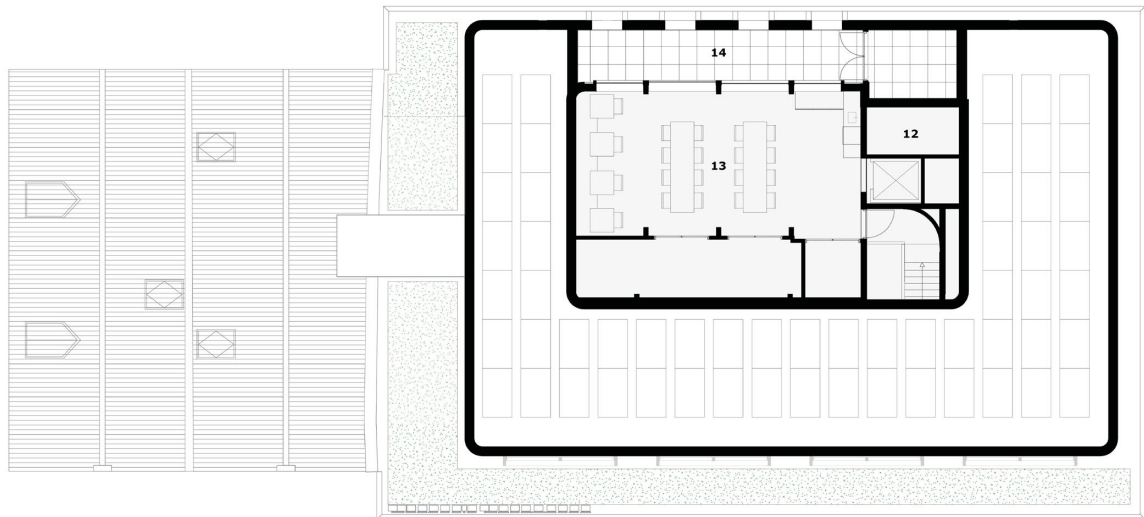


Ground floor

### LEGEND

- |                        |                         |                   |
|------------------------|-------------------------|-------------------|
| 1. entrance zone       | 6. working area         | 11. chamber mayor |
| 2. service point       | 7. toilet               | 12. installations |
| 3. waiting area        | 8. council chamber      | 13. meeting room  |
| 4. service desk        | 9. consulting room      | 14. terrace       |
| 5. back office counter | 10. ceremonial entrance |                   |





2nd floor

### Waste glaze

In addition to CLT, circular ceramic brick slips with a glaze of waste materials have been used in Renswoude. The 'waste glaze' glaze contains components from the waste incinerators of household waste and consists largely of recycled glass. Pieces of glass from the bottle bank on the corner of the street are used in the facade of the Municipal House. The brick slips were produced by Dijkstra Friese Kleiwarenfabriek.



fragments production 'Waste glaze'







*facade fragment, corner construction with awning*





*interior ground floor monument, monumental staircase*



*interior ground floor monument, consultation room*

**zecc**

GROUNDING ARCHITECTURE



*interior ground floor, Council Chamber*



*interior 1st floor, working area*

**zecc**

GROUNDING ARCHITECTURE



## The interior

The monument is visually kept separate from the new building by creating a transparent corridor in between. This is also the place of the entrance. This has been implemented in the interior by allowing the reused clinker paving from the outside and exterior facade finishes to continue here.

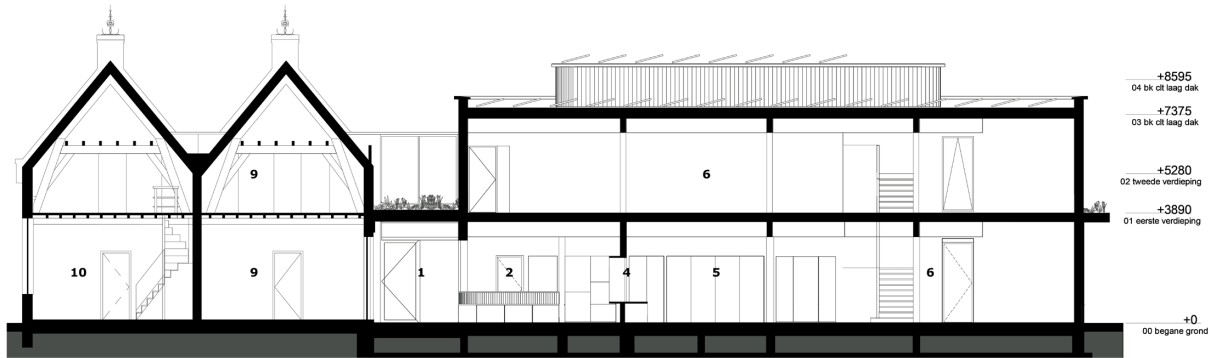
In the monument, the later additions of low quality have been removed and, where possible, they have been greatly preserved by means of insulation, secondary windows and a new installation principle. On the ground floor, the monumental original entrance hall (which is still used for weddings), meeting rooms and mayor's room have been chosen to bring back the original green color scheme of ceilings and beams and to supplement this with light tones and warm accents. On the first floor, a partly original wooden trace layer and roof structure have been brought back into view as white wood, also supplemented with light shades and warm color accents.

In the materials of the new building, a loose, modern translation of what is happening in the monument can be seen. For example, the wooden CLT construction is a reference to the wooden roof, which provides a warm, natural feel to both building parts because all wooden columns, beams, floors and walls are kept in sight. This is reinforced by the large window openings to the green opposite, which, together with the transparent and flexible infill, ensure that everywhere in the building the natural location becomes part of not only the exterior, but also the interior. The base is also supplemented with white walls and light gray carpeting that catch the light as much as possible. As a reflection on the informal, lively and personal character of the municipality and its services, warm, soft areas of color have been added, which at the same time provide orientation within the whole.



*interior ground floor, working area*





*principle section*



*east facade, during construction of wood construction*



*east facade, in use*





## CLT

The new building is mainly built with Cross-Laminated Timber supplemented with timber frame construction, a construction method that is very efficient but above all sustainable. These ambitions have been important from the start of the process, which is why the choice for this could be made at an early stage of the design process and was carefully monitored in the further process.

CLT can be applied circularly, the wood stores CO<sup>2</sup> and has lower CO<sup>2</sup> emissions during production than, for example, concrete or steel. CLT was also chosen because it allows you to build quickly and efficiently. The prefabricated structural wooden frame is mounted on the construction site in a relatively short time. The solid wooden construction boards for the floors and roof, made up of several layers of cross-glued wood, are also structurally very strong.

The need for circular and sustainable construction is evident and also reason for Zecc to opt for 'new applications' such as building with CLT. But not entirely unimportant was that the appearance of the wooden CLT construction fits beautifully with the old trusses that can be seen in the roof of the national monument. Old and new are connected in this way. CLT is therefore convincingly the most suitable construction method for Renswoude. This has been done with a view to a more sustainable future, an efficient construction process and in line with the historical value of the old town hall.



**zecc**





*interior ground floor, work zone*



*interior ground floor, service desk*

**zecc**

GROUNDING ARCHITECTURE



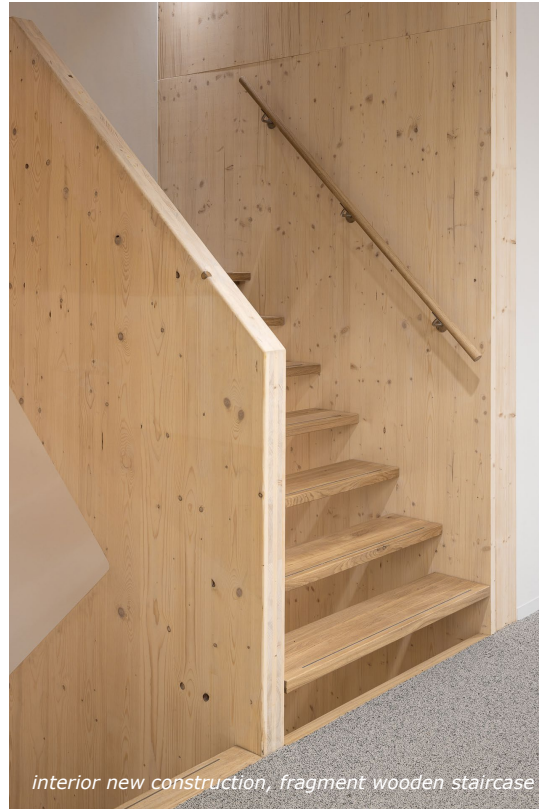


interior, fragment Council Chamber

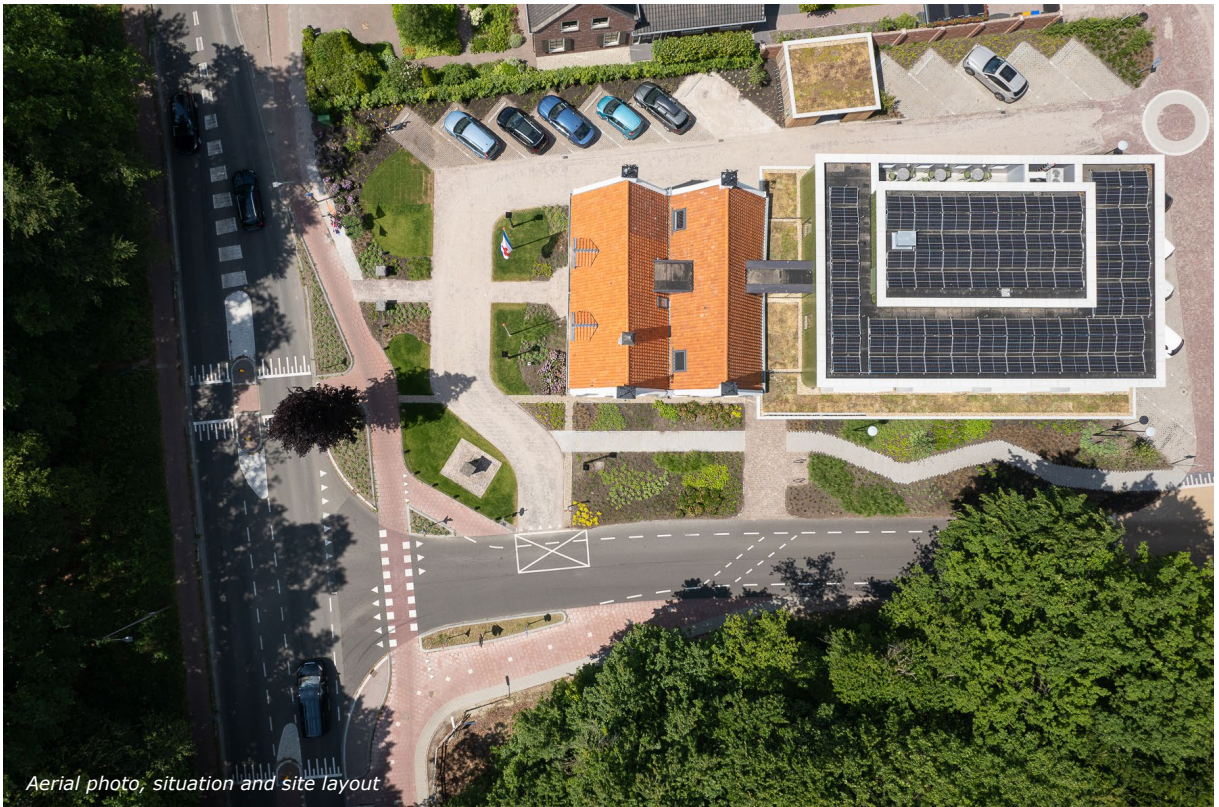




*interior monument, consulting room*



*interior new construction, fragment wooden staircase*



*Aerial photo, situation and site layout*

**zecc**

GROUNDING ARCHITECTURE



## CONTACT

### **Zecc Architecten**

Tractieweg 41 (studio A)  
3534 AP Utrecht  
Nederland  
T+31(0)30 273 1289  
info@zecc.nl  
www.zecc.nl

### **Photographer**

Stijn Poelstra Photography & Video

