

## STEEL CRAFT HOUSE

<b>client</b>	Roland Manders and Hanne Caspersen
<b>category</b>	transformation
<b>floor area</b>	95 m <sup>2</sup>
<b>project team</b>	Marnix van der Meer, Roy van Maarseveen
<b>facade</b>	Corten steel (Staalstudio)
<b>interior</b>	oak slats
<b>period</b>	2010 -2020
<b>location</b>	Bouwstraat Utrecht, The Netherlands



The Steel Craft House is a fine example of self-building. In a period of ten years, a former garage was converted into a wooden residence with a Corten steel facade. It was a challenging task where good cooperation, perseverance, and love for the craft led to an incredible end result. Zecc designed the facade, the clients realised the entire project themselves with the assistance of befriended craftsmen. Every steel sheet and every oak slat literally passed hands several times.

In the Steel Craft House, the stylistic features of a working-class house were revamped. The residence strongly stands out in abstraction and material, but it is in keeping with the adjacent buildings through shape, composition, and detail. Features like the characteristic facade layout,



ZECC ARCHITECTEN BV TRACTIEWEG 41 3534 AP UTRECHT  
THE NETHERLANDS T+31(0)30 273 1289 INFO@ZECC.NL WWW.ZECC.NL  
BANK NL59 RABO 0394 6127 44 KVK 30 183 613 LID BNA

**ZECC**

GROUND ED ARCHITECTURE



**zecc**

GRAUNDED ARCHITECTURE



**zecc**

GROUNDING ARCHITECTURE



the roof cowl with dormer, and a chimney were translated in the steel cladding. Stylistic elements like a plinth, alternating stone bands, brick-on-edge courses, and cornices can also be found in the steel sheet pattern.

The windows in the new facade all have their own character, anticipating the function that is housed behind them, but jointly form an abstract composition. At the street level, a transparent recessed front was chosen, which had already been present in the facade appearance, and this way it is more in keeping with the neighbouring buildings. The 'bay window', shaped as a cantilevering enclosed surface at the location of the bathroom, provides for privacy. A small air gap was made at the top. The second surface on the first floor is a mini loggia / French balcony, behind which the living room is located.

Behind the hard, occasionally somewhat closed steel facade, hides a soft and light residence. The interior is formed by a sculptural piece of 'furniture' in oak over three building layers. Extra daylight enters via a patio and several





skylights. For instance, the dormer was equipped with a light dome, and in the bathroom the light enters via a small air gap in the 'bay window' of the front facade.

With its characteristic facade, the Steel Craft House stands out from its surroundings, but simultaneously, the reference to the recognisable theme of the working-class house ensures that the modern residence integrates with the surrounding buildings. Not just this reference but the expression of craftsmanship – which makes this district so beloved – contributes to the integration, too. The appearance of the steel has a paradoxical quality. At first glance, it contrasts with the brick neighbouring buildings, but at the same time, it is beautifully in keeping with them because the discolouration of the Corten steel refers to the patina of the archetypical Dutch brick. The choice for Corten steel was also made out of love for this material; the client of the Steel Craft House is the greatest steel artist in Utrecht (Staalstudio).



**zecc**



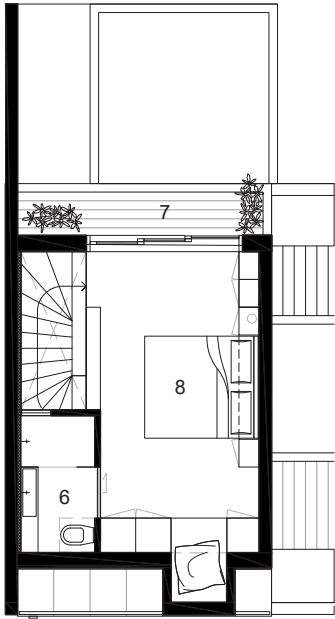
**zecc**

GROUNDING ARCHITECTURE

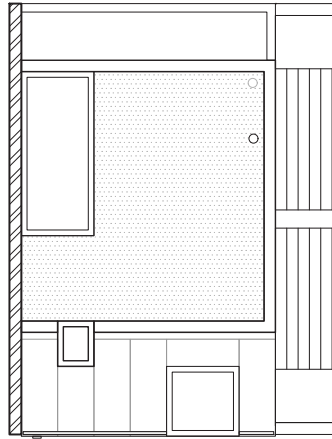


**zecc**

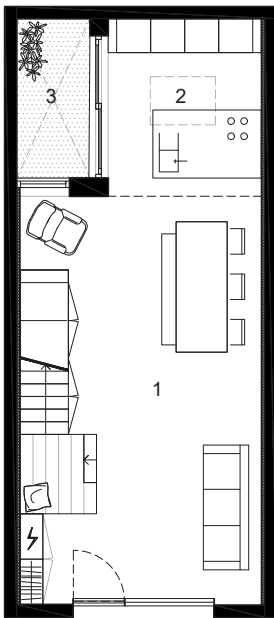
GROUNDING ARCHITECTURE



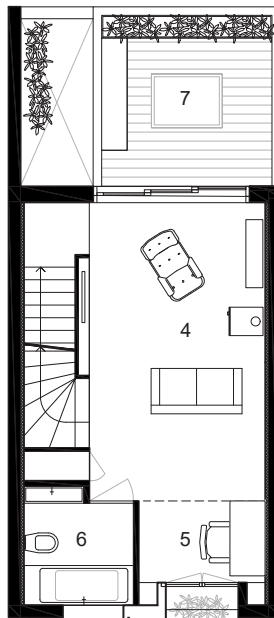
2e verdieping / 2nd floor



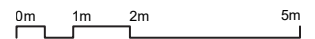
dak / roof



begane grond / ground floor



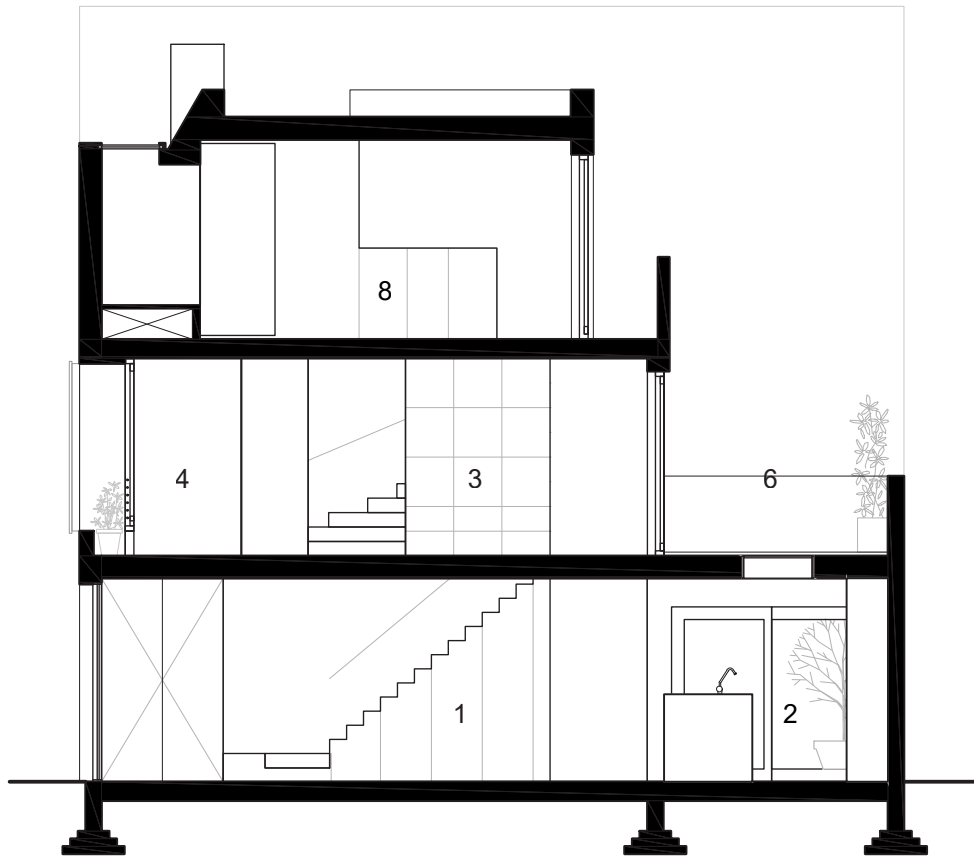
1e verdieping / 1st floor



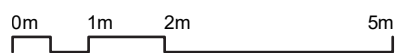
- 1 eetkamer / dining room
- 2 keuken / kitchen
- 3 patio / courtyard
- 4 huiskamer / living room
- 5 werkkamer / workplace
- 6 badkamer / bathroom
- 7 balkon / balcony
- 8 slaapkamer / bedroom







doorsnede / section



- 1 eetkamer / dining room
- 2 keuken / kitchen
- 3 patio / courtyard
- 4 huiskamer / living room
- 5 werkkamer / workplace
- 6 badkamer / bathroom
- 7 balkon / balcony
- 8 slaapkamer / bedroom



## CONTACT

### **Zecc Architecten**

Tractieweg 41 (Studio A)  
3534 AP Utrecht  
Nederland  
T+31(0)30 273 1289  
pr@zecc.nl  
www.zecc.nl

### **photograpy**

Stijnstijl Fotografie  
www.stijnstijl.nl