



Address: Herenstraat 4k, 3512 KC Utrecht, The Netherlands. **Project management:** Liesbeth Wassenberg, Bouwvrouw. **Energy concept:** OPAi. **Client:** private client / Foundation Sustainable Renovation of Historic Buildings. **Completion:** 2007. **Gross floor area:** 250 m². **Building type:** church. **Lighting technique:** various. **Light function:** illuminate previously dark space, provide suitable atmosphere.

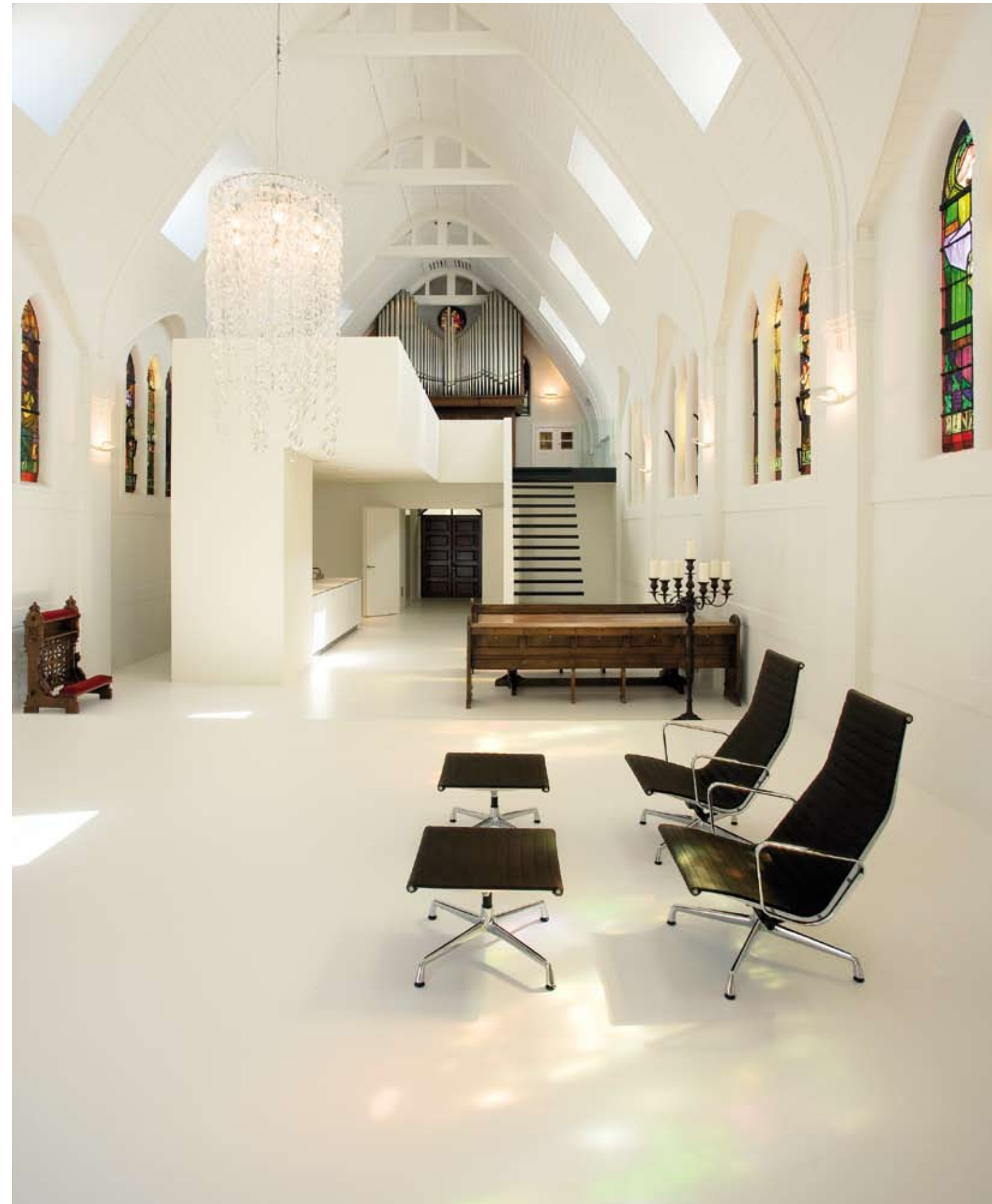


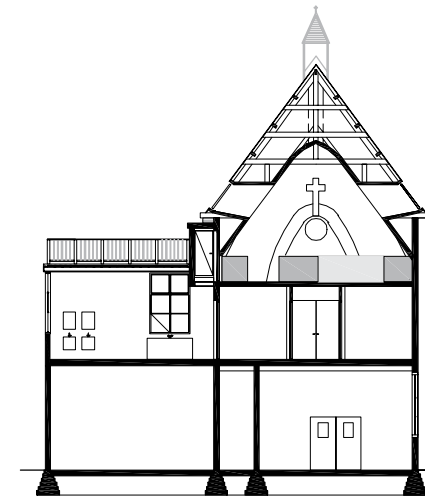
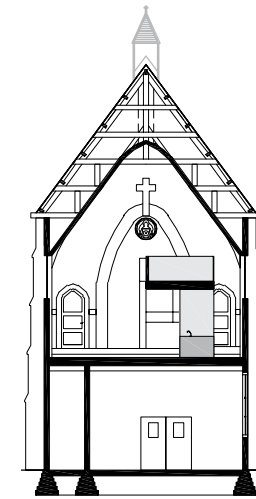
↑ | View from the organ
→ | Modern lighting complements natural light from stained glass windows

Chapel

Utrecht

The balcony, where the organ is situated, has been maintained and extended, free in the space. The asymmetric placing of this organizing element creates a new spatial hierarchy. The stained glass has also been maintained, despite its contribution to the dark character of the church. Because of this, roof lights have been added to the space, allowing diffused daylight to enter the chapel. In combination with a completely white interior, the stained glass comes to life. The additional windows, the gentle play of colored light through the stained glass and the use of soft, white lighting gives the space a light, elegant and airy feel. The private quarters have been fitted with a chandelier-type element of candle like lights, giving the rooms a more modern feel and linking the private rooms to the shining candles in the church hall.





← | Cross sections
 ↓ | Subtle lighting in private quarters

↑ | Private quarters modernized by lighting
 ← | Cross section

