

## QUAY HOUSES GRONINGEN

<b>title</b>	25 houses along the Eemskanaal Groningen, the Netherlands
<b>client</b>	Heijmans Vastgoed Almere / Assen
<b>project team</b>	Marnix van der Meer, René de Korte, Rolf Bruggink, Edwin Deen
<b>contractor</b>	Heijmans bouw
<b>program</b>	25 large dwellings
<b>period</b>	2004-2010
<b>item</b>	The design is part of an urban plan KCAP. Apartment building by Mecanoo Architects.

On the South-east side of Groningen an industrial area has become indistinct. Here for a large constructing area has become available. A few existing buildings on the waterside stay as they are. On the other area's big enclosed building-blocks will be realised. These building-blocks have a large common courtyard and a constructed parking place.



ZECC ARCHITECTEN BV TRACTIEWEG 41 3534 AP UTRECHT  
THE NETHERLANDS T+31(0)30 273 1289 INFO@ZECC.NL WWW.ZECC.NL  
BANK NL59 RABO 0394 6127 44 KVK 30 183 613 LID BNA

**ZECC**

GROUND ED ARCHITECTURE

The building-block contains an apartment building designed by Mecanoo, and a row houses along the water, designed by Zecc Architecten. The difference in height between these two elements is distinguished.

Our design regards houses with four floors. The houses are being build in a row, but all of them have an individual touch. This individual touch is realised by the sculptural design of the entrance stairs, the vertical articulation of the houses and the different sorting of brick used for the façade's. The lower two levels are realised as a split-level. This is to create enough privacy on the road side and on the same time realise a nice high kitchen on the, private, terrace side.

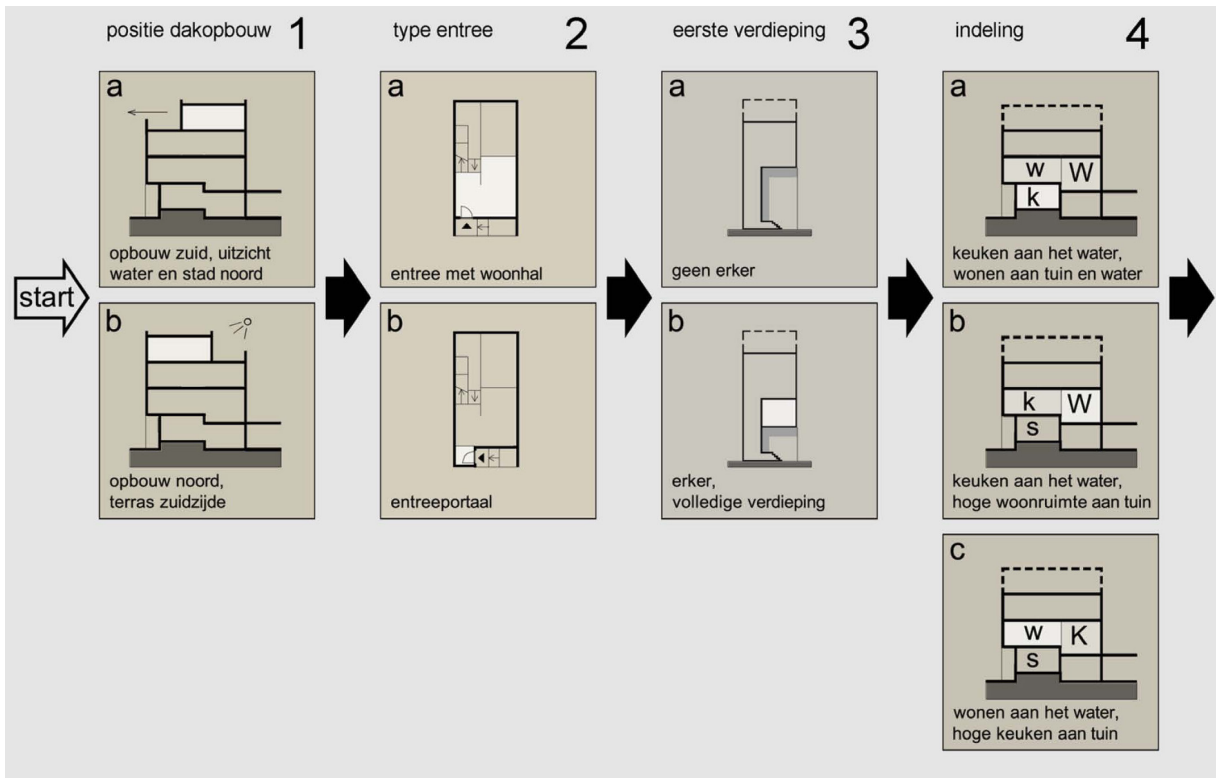
The houses are strong serially in terms of building system, but offer space for many requirements: additional roof terrace on the south side or view on the water, possibility to choose a larger bay window in the front or a larger entrance area at the ground level.

As corner solution is chosen for weaving two properties together, so both can enjoy the qualities of the Eems canal.



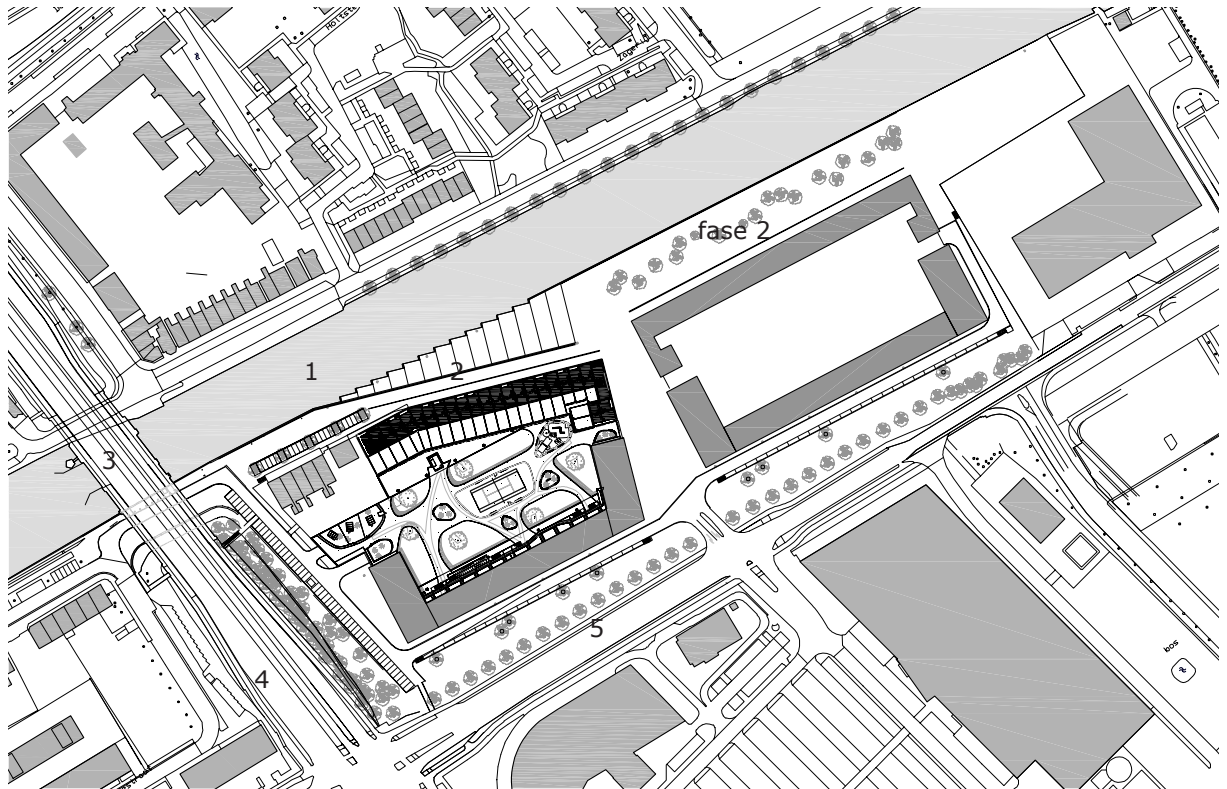
**zecc**

GROUND ED ARCHITECTURE

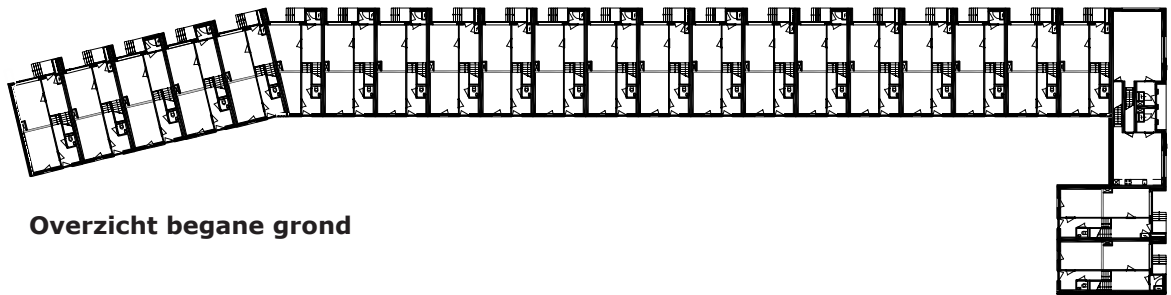


**zecc**

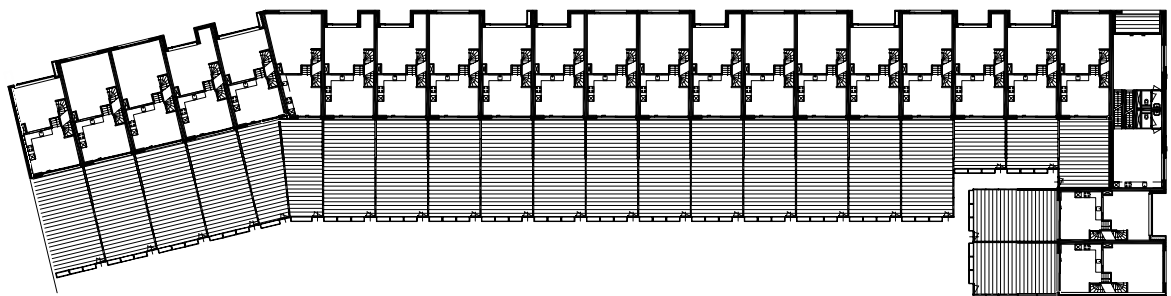
GROUNDLED ARCHITECTURE



- 1 Eemskanaal
- 2 Eemskanaal zuidzijde
- 3 Oosterhavenbrug
- 4 Europaweg
- 5 Sontweg



**Overzicht begane grond**



**Overzicht 1e verdieping**





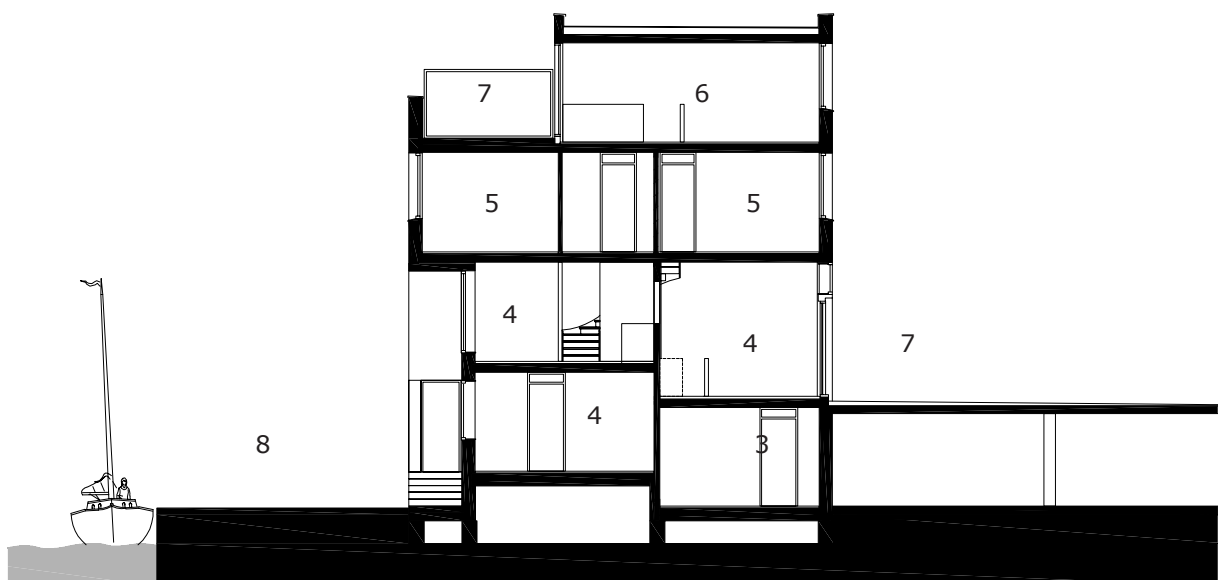
**begane grond**

**eerste verdieping**

**tweede verdieping**

**derde verdieping**

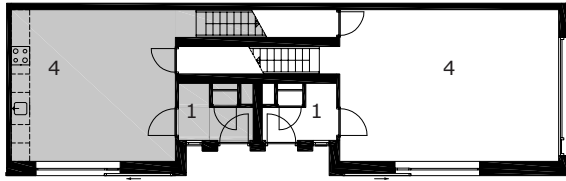
- 1 entree
- 2 entree berging
- 3 berging
- 4 wonen / koken / hobby
- 5 slapen
- 6 onbenoemde ruimte
- 7 terras
- 8 kade



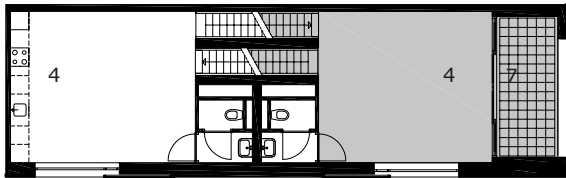


**zecc**

GROUNDING ARCHITECTURE



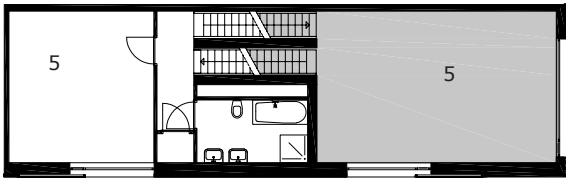
**begane grond**



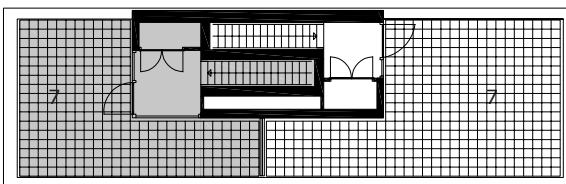
**eerste verdieping**



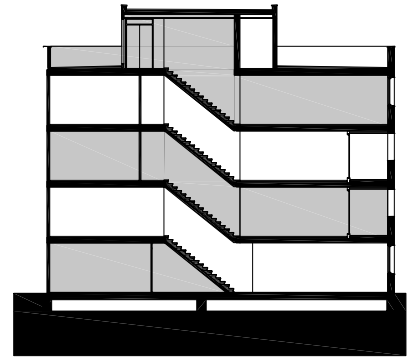
**tweede verdieping**



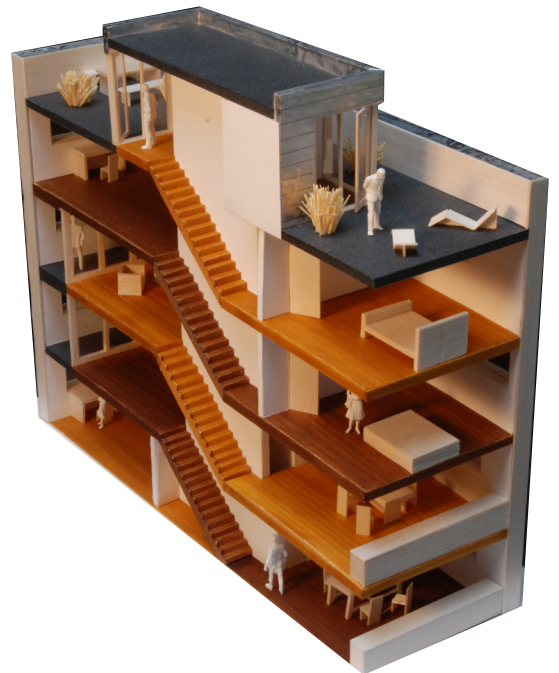
**derde verdieping**



**vierde verdieping**



- 1 entree
- 2 entree berging
- 3 berging
- 4 wonen / koken / hobby
- 5 slapen
- 6 onbenoemde ruimte
- 7 terras
- 8 kade





**zecc**

GROUNDING ARCHITECTURE



**Contact and Info**

more information via [info@zecc.nl](mailto:info@zecc.nl)

Fotografie en rechten fotomateriaal: Rob de Jong, Saph

[info@saph.nl](mailto:info@saph.nl)

[www.saph.nl](http://www.saph.nl)



**zecc**

GROUND ED ARCHITECTURE