

DE STAALMEESTER

client	Van Bekkum Projecten BV
category	Residential & commercial
program	27 apartments, 2 commercial spaces
project team	Mark Gijsbers, Mike Luijrink en Gianni Nieland
contractor	Van Bekkum
consultants	M3E, WSP, Peutz, Ecoresult
floor area	2.350 m ² BVO
period	2020 - 2026
location	Amersfoort Vathorst

De Staalmeester is an industrial residential building on the outskirts of Vathorst. Commissioned by Van Bekkum, Zecc Architects designed a diverse residential complex featuring 27 apartments, two commercial spaces on the ground floor, and communal facilities.

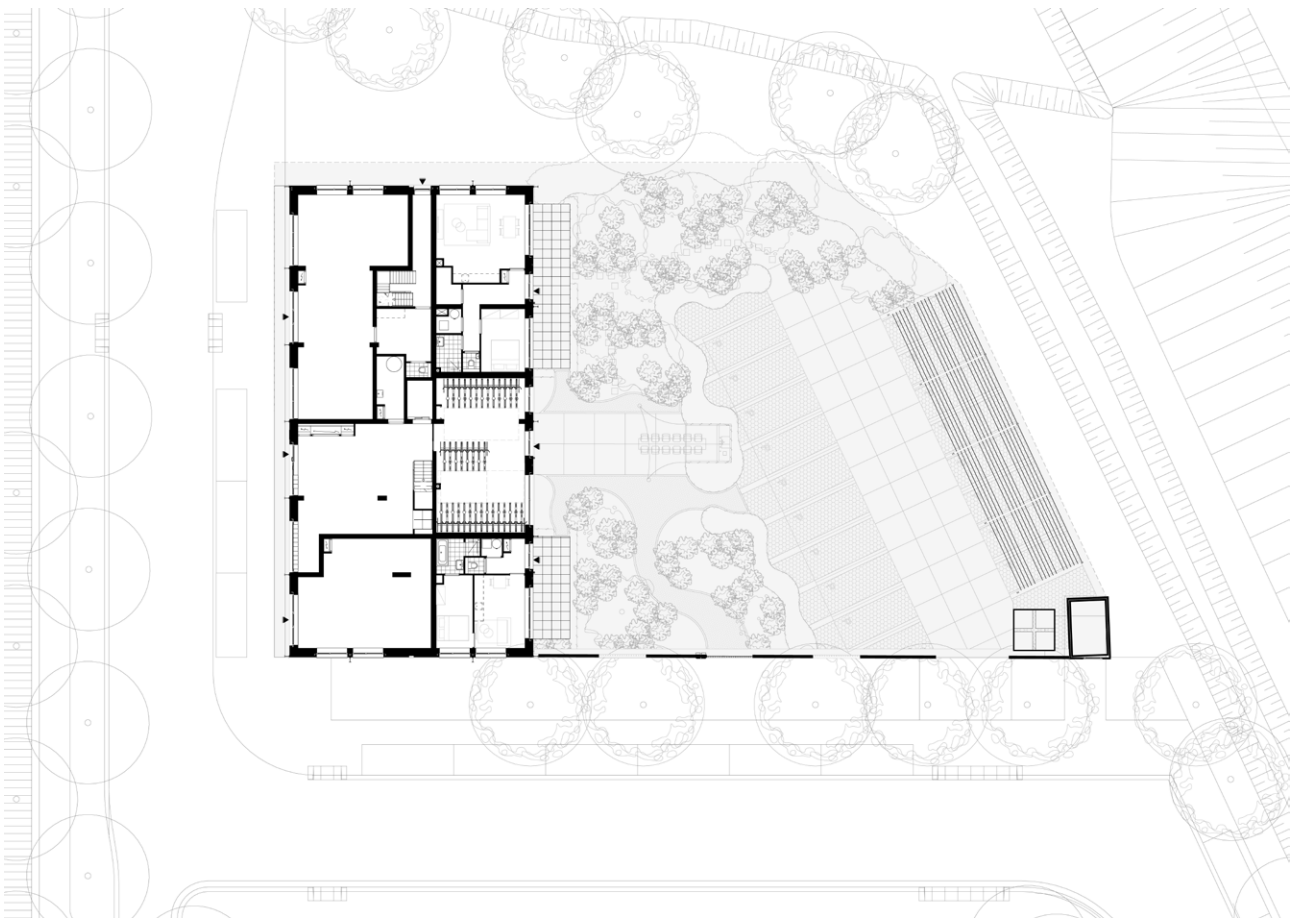
The project combines compact and medium-sized homes with spacious outdoor areas, a shared garden, and practical communal facilities. The commercial spaces bring activity to the street, while the communal garden and facilities encourage interaction among residents.



Facade fragment



Facade facing the "Laak" waterway



 *Situation*



Aerial view from the "Laak" waterway toward the A28

Design and Integration

De Staalmeester was designed for a site where the location called for careful integration. The building is located in Laak 3, a subarea on the outskirts of Vathorst, between the waters of the Laak and the embankment of the access road. In this way, the residential building connects both to the quiet, green waterside environment and to the more urban side toward the center of Vathorst. The building has been given a distinctive appearance through its rugged masonry, exposed steel structure, and substantially cantilevered balconies.

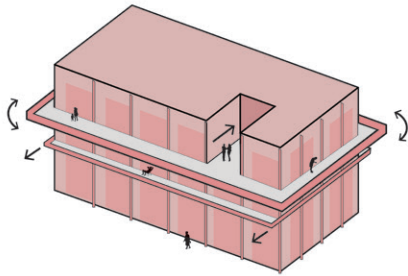


Diagram 1 - Volume & Structure

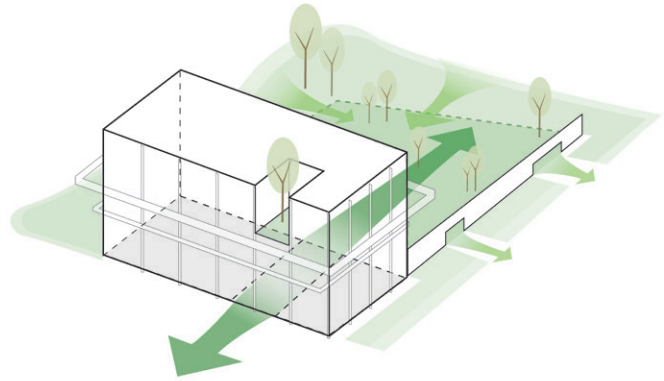


Diagram 2 - Connection & plot

Housing Program and Quality of Living

The building stands out for its combination of a diverse housing program and a strong social mission. The project brings together various housing types, including panoramic apartments spanning the full depth of the building, maisonettes, and spacious homes facing the garden. As a result, De Staalmeester caters to multiple target groups and housing preferences, ranging from compact apartments to more spacious homes with generous outdoor areas. With its meticulous detailing, varied housing options, and emphasis on community, De Staalmeester is more than just a residential building: it adds quality of life, a sense of community, and a distinctive architectural character to Amersfoort.

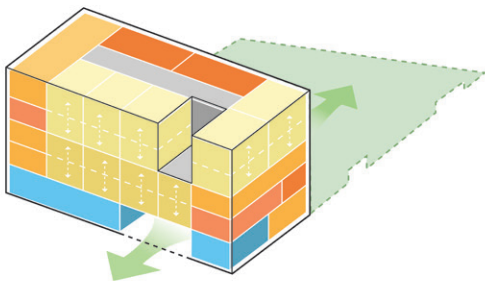


Diagram 3 - Program & Configuration

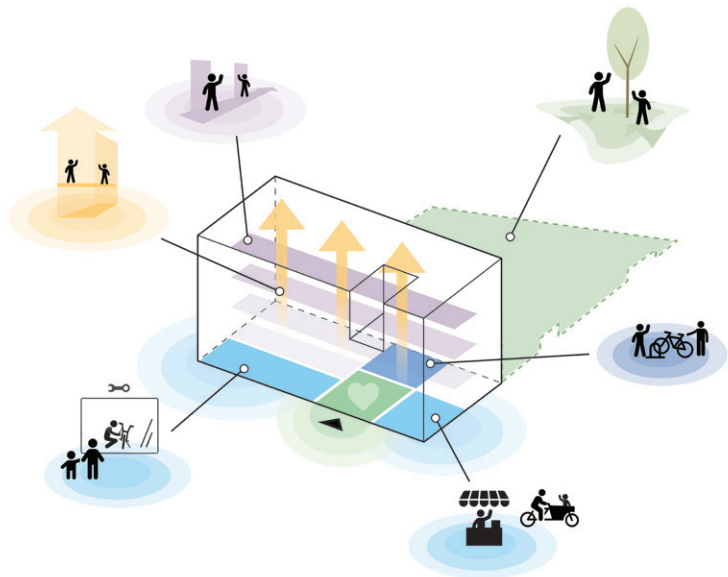


Figure 4 - Function and Use

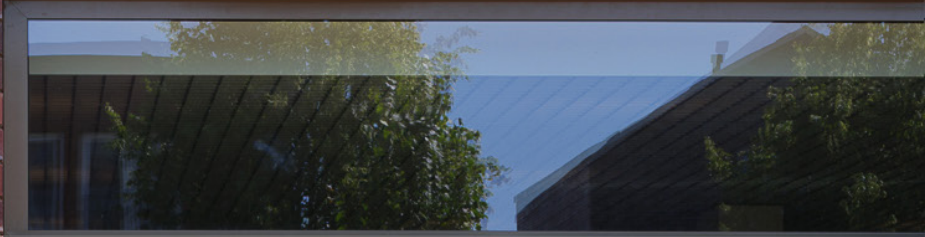


Corner view Terschellingskade / Texelstraat-noord

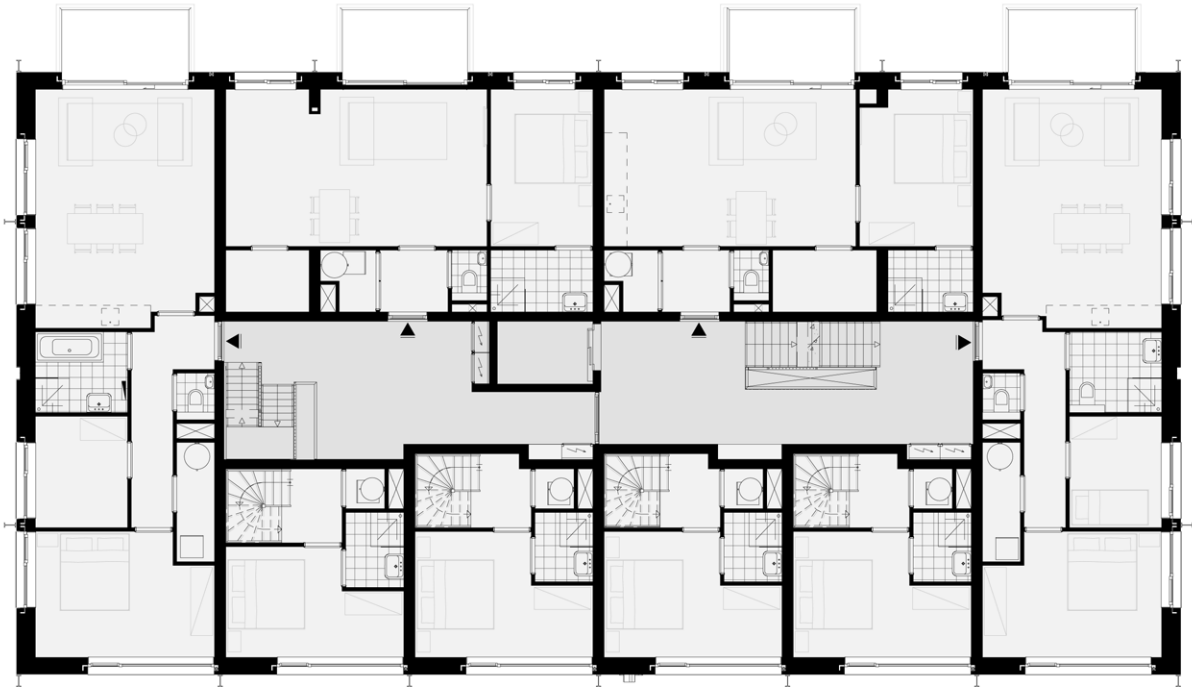


Corner view from the "Laak" watercourse

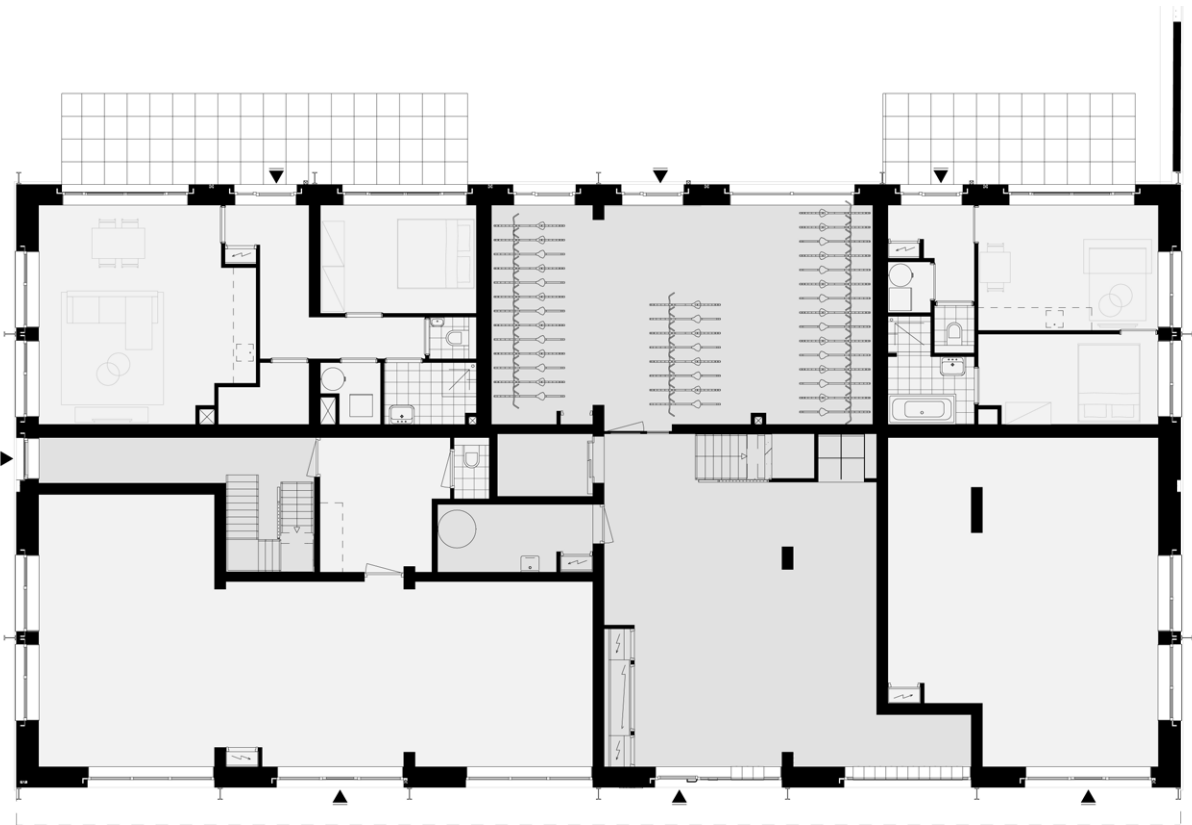
STANLEY MEESTER



Main Entrance



Floor Plan: 1st Floor



Floor Plan: ground floor



Corner facade section



Floor Plan: 4e Floor



Floor Plan: 3e Floor



Corner view Terschellingskade / Texelstraat-noord



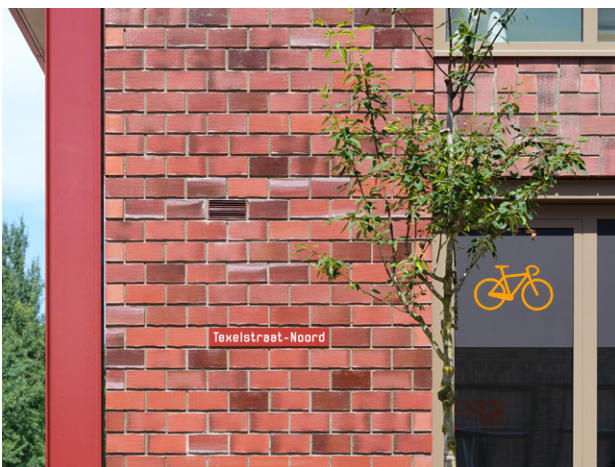
Longitudinal section

Community and the Living Experience

In addition to the individual homes, considerable attention has been paid to social interaction and shared use. The communal garden plays a key role in this regard. This green outdoor space offers residents a place for rest, relaxation, and socializing. The design also emphasizes greenery and biodiversity, featuring elements such as planters serving as balcony screens, a tree on the fifth floor, hedgehog gates, and insect hotels. The communal pavilion with a barbecue reinforces the project's social character and encourages informal interaction among neighbors. Practical amenities, such as car-sharing, a shared cargo bike, shared washing machines, a bicycle parking area, and communal common areas, also contribute to a contemporary way of living.



South-facing outdoor garden with a covered dining area



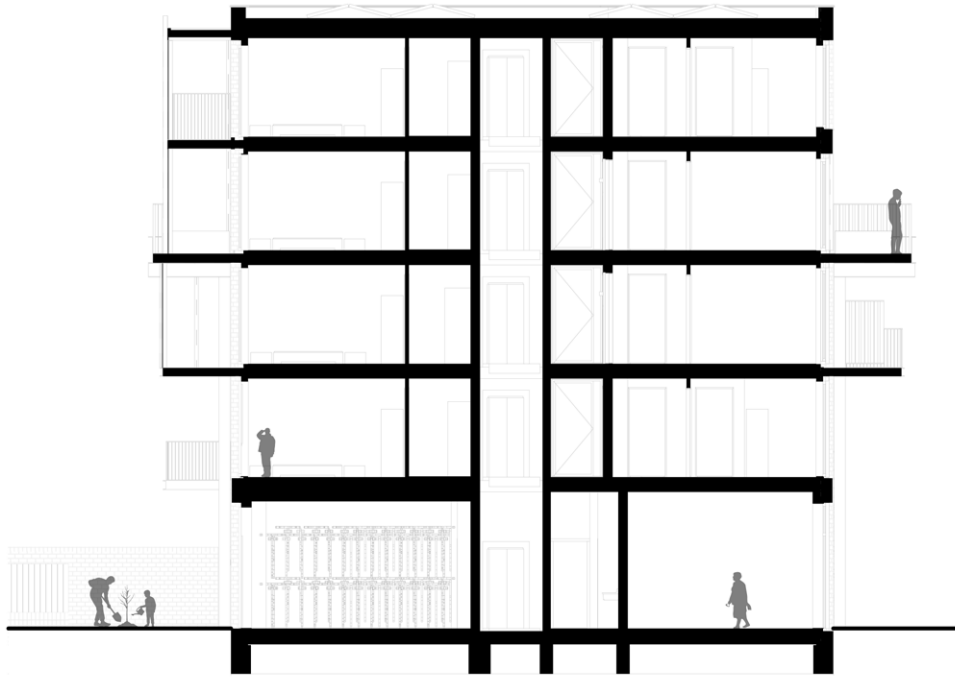
Detail of street name on a facade plaque



Residents in an indoor dining area



Rear facade with garden facade



Cross-section



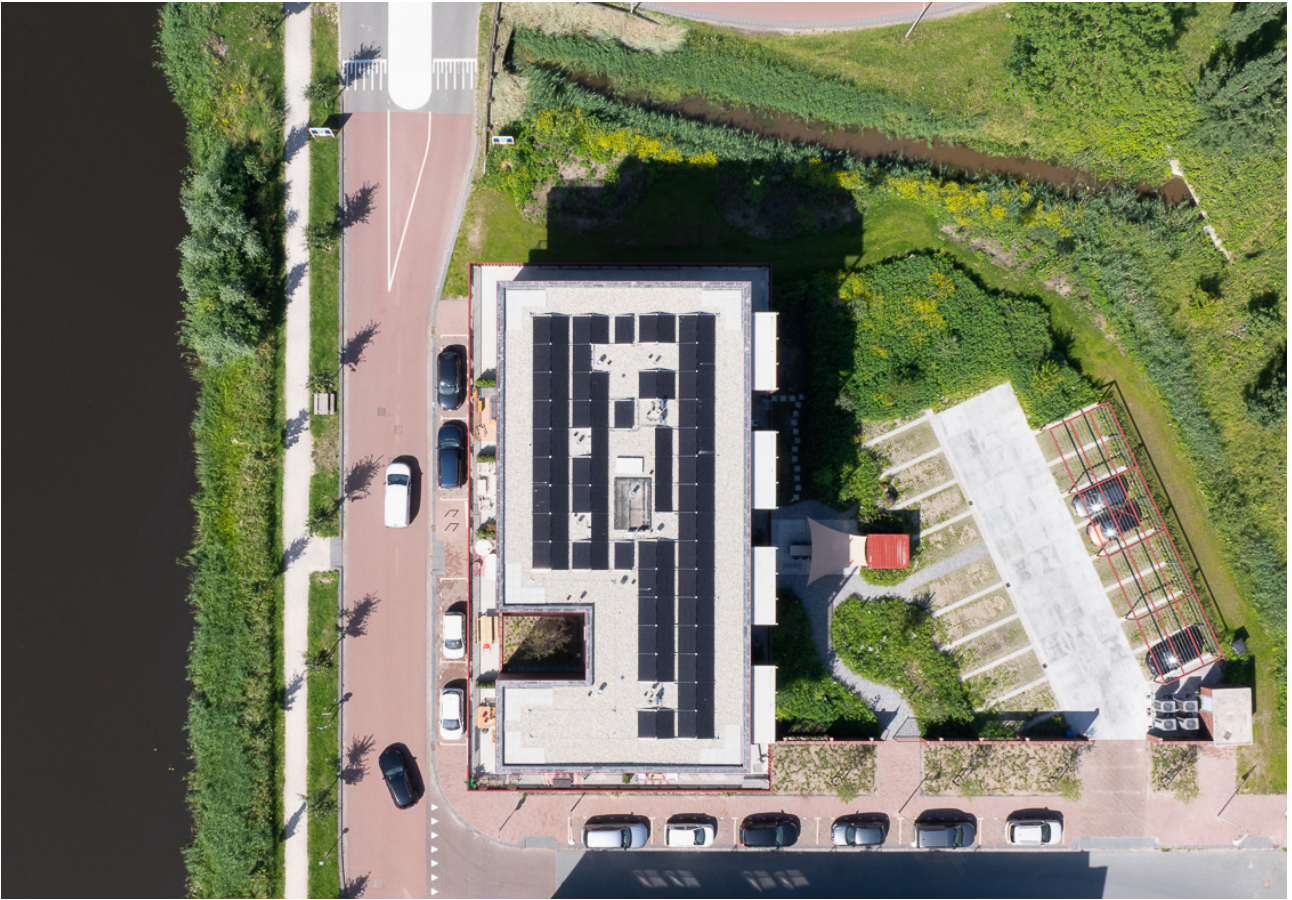
Side view and rear facade



Facade section: corner balconies



Garden Facade



Aerial photo



Facade section: corner balconies

CONTACT

Zecc Architecten

2e Daalsedijk 14-4
3551 EJ Uterecht
Nederland
T+31(0)30 273 1289
info@zecc.nl
www.zecc.nl

Photography

Stijn Poelstra